



**Specs and Drawings of Exhibition Booth**  
**Deadline: 31 January 2019**

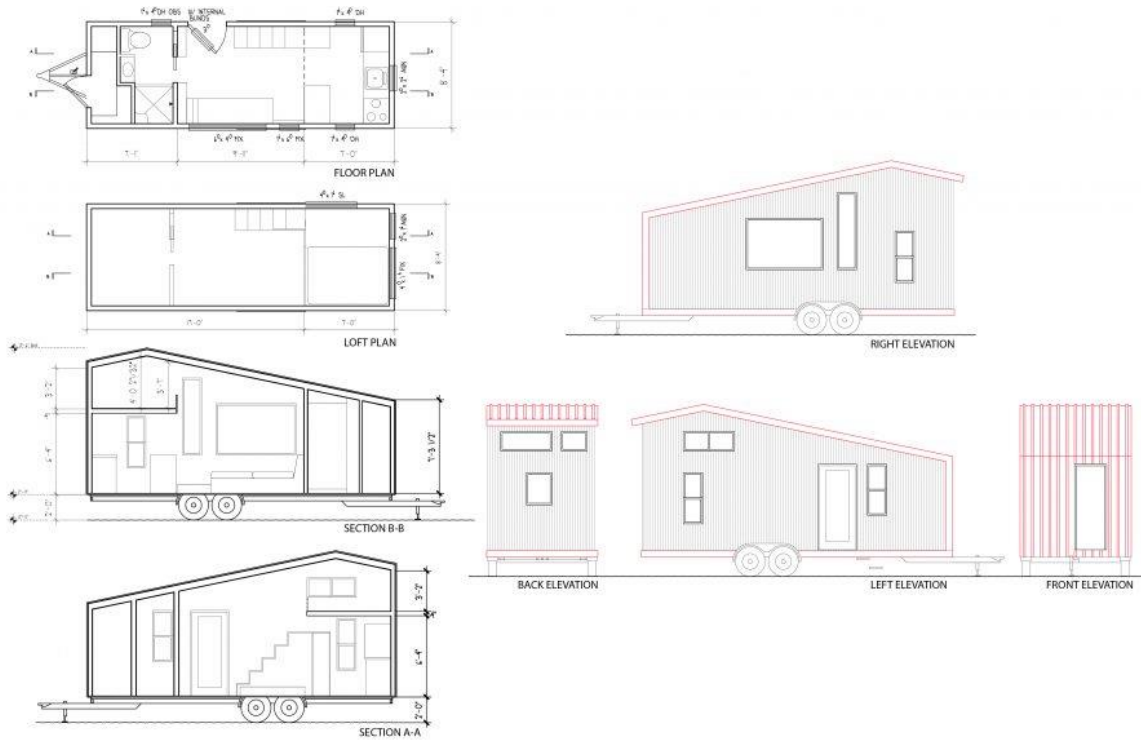
**All Exhibitors/Creatives are to submit detailed drawings of your booth space to [jjayin@singaplural.com](mailto:jjayin@singaplural.com). To include:**

1. Floorplan
2. Sections
3. 2 x elevations

**IMPORTANT** notes when preparing for your drawings:

- Drawings in scale 1: 20 (A3 size)
- Dimensions in millimeters (mm)
- Annotations to include material usage and finishes
- Position of electrical and lighting points. **(Please standardize the electrical legend using the example below.)**

**Sample drawing:**



**Electrical Legend:**

