

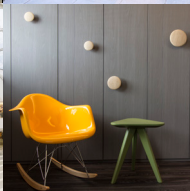
# SINGAPORE 2016

## PAVILION SHOWCASE

**Archidex 2016**

Kuala Lumpur Convention Centre  
Malaysia

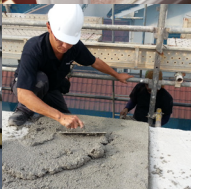
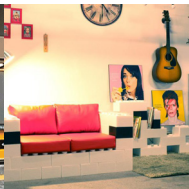
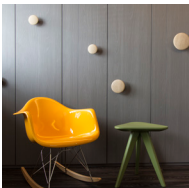
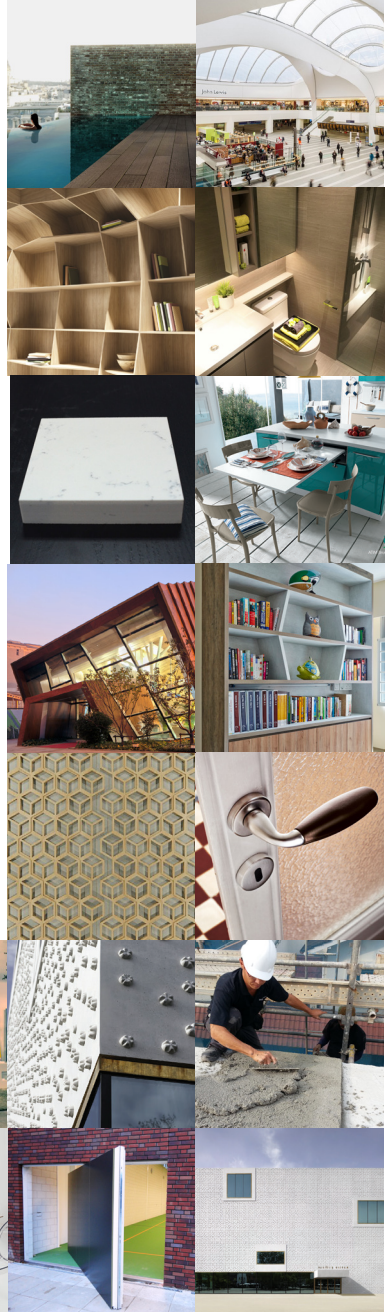
20 - 23 July 2016



FUTURE READY  
**singapore**

# Contents

- 2 About SFIC and IE Singapore
- 3 Hall Layout & 4321 Design Pte Ltd
- 4 ABS Building Products Pte Ltd & EDL Pte Ltd
- 5 EWINS Pte Ltd & Greenlam Asia Pacific Pte Ltd
- 6 KEEP Office Pte Ltd & Parafoil Design & Engineering Pte Ltd
- 7 Seasonstone Singapore Pte Ltd & TR Formliners Pte Ltd
- 8 Vector Foiltec Pte Ltd & Vodapruf Pte Ltd





## Singapore Furniture Industries Council (SFIC)

Singapore Furniture Industries Council was established in 1981 as the official representative body of Singapore's furniture and furnishings industry. Its membership comprises furniture manufacturers, interior fit-out specialists, retailers, designers, as well as furnishings and materials suppliers. Currently, the council represents 95% of established furniture manufacturers in Singapore, of whom 65% have subsidiary manufacturing plants in various countries across the region, including China, Indonesia, Malaysia, Myanmar, Thailand, and Vietnam.

SFIC's primary role is to promote the interests of its members and of the Singapore furniture and furnishings industry. For 35 years, SFIC has

helped its members to adapt to changes in the business environment by introducing trade, talent, design development and business innovation activities, as well as upgrading business capabilities. Revolving around SFIC's 3i strategic framework – Improve, Innovate, and Integrate, all of the Council's programmes aim to grow the local furniture and furnishings industry and ultimately, to strengthen the 'Singapore brand' globally.

Visit [www.singaporefurniture.com](http://www.singaporefurniture.com) for more information.

T +65 6569 6988  
F +65 6569 9939  
E [sfic@singaporefurniture.com](mailto:sfic@singaporefurniture.com)



## International Enterprise (IE) Singapore

International Enterprise (IE) Singapore is the government agency driving Singapore's external economy. It spearheads the overseas growth of Singapore-based companies and promotes international trade.

With its global network in over 35 locations spanning many developed and emerging markets, IE Singapore attracts global commodities traders to establish their global or Asian home base in Singapore and connects

businesses with relevant Singapore-based companies for their business expansion.

Visit [www.iesingapore.com](http://www.iesingapore.com) for more information.

230 Victoria Street #10-00  
Bugis Junction Office Tower  
Singapore 188024  
T +65 6337 6628  
F +65 6337 6898

# Archidex 2016

## Kuala Lumpur Convention Centre Malaysia

EWINS Pte Ltd  
Booth No. 9E076, 78, 80

KEEP Office Pte Ltd  
Booth No. 9E084

Parafoll Pte Ltd  
Booth No. 9D083

Seasonstone Singapore Pte Ltd  
Booth No. 9D081

Singapore Furniture Industries  
Council  
Booth No. 9E082

TR Formliners Pte Ltd  
Booth No. 9D075 - 77

Vector Foiltec Pte Ltd  
Booth No. 9E086

VodapruF Pte Ltd  
Booth No. 9D079



ABS Building Products Pte Ltd  
Booth No. 1D069

4321 Design Pte Ltd  
Booth No. 8H221

EDI Pte Ltd  
Booth No. 8J242

Greenlam Asia Pacific Pte Ltd  
Booth No. 8H227

### 4321 Design Pte Ltd

Booth No. 8H221

**DESIGN**<sup>TM</sup>  
Art Panel

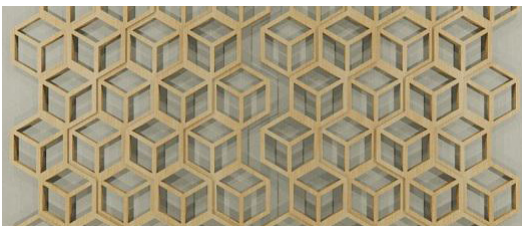
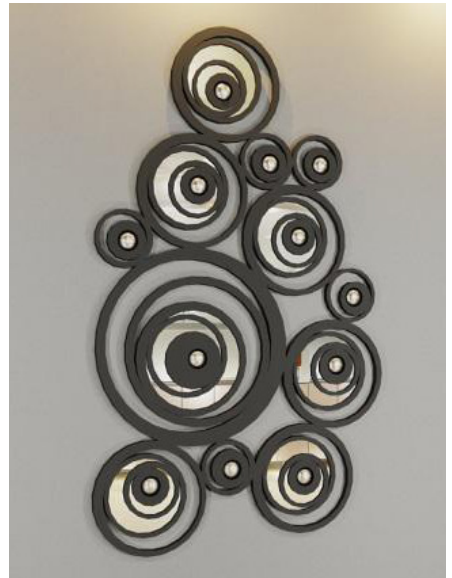
#### Mr Andy Yow

Director  
13 McNair Road  
Singapore 328520

T +65 6226 4321  
E andy@4321design.asia  
W www.4321design.asia

We design and manufacture what we called 'Art Panels'. Wall panels, room dividers, ceiling panels, 3D wall art etc. All in a brand new and creative approach. We also tailor-made to your requirements from sizes to thicknesses and from materials to finishes. We are direct manufacturer operating from our Johor factory to ensure fair price and quality.

Come pop by our booth and we can show and share more with you. We look forward to seeing you.



## ABS Building Products Pte Ltd

Booth No. 1D069



### Mr Steven Lee

General Manager - Malaysia  
160 Paya Lebar Road  
ORION 06-09  
Singapore 409022

T +65 6841 7600  
E enquiry@absbldg.com  
W www.absbldg.com

A leading supplier in ironmongery, signage & flooring - ever since the incorporation as ABS-Kimsign in 1987, ABS-Kimsign (Singapore) Pte Ltd has been providing building products for the Singapore market for more than 25 years. In 2007, having undertaken a management restructuring with an objective to provide a much more comprehensive service as well as technical support not only for the local but also overseas market, ABS-Kimsign (Singapore) has since then been known as ABS Building Products Pte Ltd (hereafter as "ABS").



## EDL Pte Ltd

Booth No. 8J242

# EDL

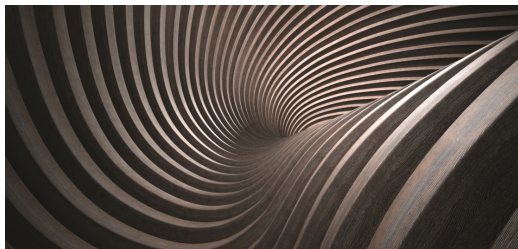
### Ms Daphne Lim

Director  
43 Sungei Kadut Street 1  
Singapore 729348

T +65 6369 0990  
E daphne.lim@edleuro.com  
W www.edleuro.com

EDL is the leading distributor of high pressure laminates in Asia. The EDL story is one of ideas - great, insightful ideas that have shaped the company and its vision to what it is today. Just as high pressure laminates are more than paper and finish, its brand is more than just products.

Going beyond the surface, EDL combines science and intuition to create design-centric, quality-driven laminates that endure the passage of time. Everything it does is guided by a simple philosophy: To inspire experiences, one space at a time.



## EWINS Pte Ltd

Booth No. 9E076, 78, 80

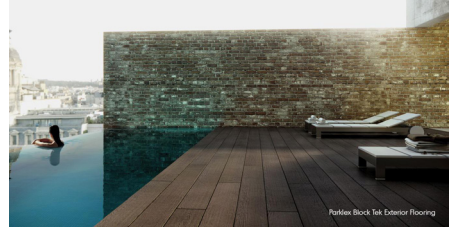


### Mr Mark Yong

Marketing Director  
39 Sungei Kadut Avenue  
Singapore 729663

T +65 6459 3311  
E [ewins@singnet.com.sg](mailto:ewins@singnet.com.sg)  
W [www.ewins-group.com](http://www.ewins-group.com)

Ewins, established in Singapore in 1967, has grown to become one of the region's major providers of furniture fittings and components, builders' hardware, and surface materials. Today, Ewins exports to more than 15 countries worldwide, and is a regional distributor of many furniture system, component and building material brands from Europe.



## Greenlam Asia Pacific Pte Ltd

Booth No. 8H227

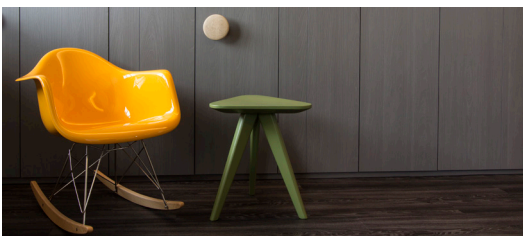


### Ms Banita Mishra

General Manager, Marketing  
11 Sungei Kadut Crescent  
Singapore 728683

T +65 6365 9138  
E [info.sg@greenlam.com](mailto:info.sg@greenlam.com)  
W [www.greenlam.com/laminatesilluminate](http://www.greenlam.com/laminatesilluminate)

Greenlam is the Asian market leader in high-pressure decorative laminates. It features the widest range of innovative laminate designs in an exclusive array of textures. With additional expertise in technical excellence, Greenlam is the first laminate company in Asia to feature a complete range of anti-bacterial laminates. Its superior design also complies with international quality standards, like those NEMA of the United States and British Standard of the United Kingdom while its quality, environmental systems and processes are ISO 9001, ISO 14001, OHSAS 18001, GREENLABEL and GREENGUARD certified.



## KEEP Office Pte Ltd

Booth No. 9E084



### Mr Patrick Tan Yu Liang

Business Development  
Manager  
20 Shaw Rd #02-08A  
Ching Shine Ind Bldg  
Singapore 367956

T +65 6281 1994  
E patrick@keep.com.sg  
W www.keeppoffice.com.sg

Being the largest online Ecommerce store for office furniture & warehousing solutions in Singapore, we offer quality and modern products with direct from factory prices to you. A spin-off from Keep Pte Ltd, as an office furniture wholesaler, Keep Office Pte Ltd plays an important part as a corporate identity specialist in the aspect of office renovation and furniture. Our role is to help your company to build up your office premises with a uniform feel in consideration of your marketing kits. We believe that building corporate identity, be it in any trade, is essential for any company to keep growing. You don't need to splurge to get a nice office done. Office should be built for your customer to remember you, same goes for marketing kits. We love to understand your business and see you grow. Our four AXIS Understand > Design > Build > Grow. As a Corporate Identity Specialist, KEEP knows what is important to help you grow. Be it internally or externally, one uniform design platform makes you unique and be remembered always.



EPP (Expanded Polypropylene) is an exceptional plastic foam:

EPP is remarkably light in weight, of high level of elasticity, able to withstand multiple impacts without damage as a result of high level of energy absorption. It is unaffected by exposure to water, oil, acid, Soda and most chemicals. EPP itself is an insulator and heat resister (40-130°C) made with odor-free property. Being an environmentally-friendly material, it is 100% recyclable without degrading in performance.



## Parafoil Design & Engineering Pte Ltd

Booth No. 9D083



### Ms Jeslin Lim

Sales Manager  
Block 1, Yishun Street 23,  
#07-04 & #07-19 YS-One  
Singapore 768441

T +65 6841 9919  
+607 5548 186  
E jeslin@parafoil-intl.com  
W www.parafoil.com.sg

Parafoil Design & Engineering Sdn Bhd  
No 10, Jalan Karas, Kempas Lama,  
81300 Johor Bahru, Johor Darul Takzim, Malaysia

Parafoil is the inventor of Singapore's very own flood barrier system that does not exist anywhere in the world. It has developed more than 13 different types of flood barrier systems to mitigate the different problems faced by building owners. Flood barrier solutions are customized for the building owners to meet, not only the Catchment and Waterways Department, but also the fire brigade's requirements for unobstructed "Means of Escape" in the event of an outbreak of fire in the building during a potential flood. Parafoil's FloodSentry pop-up flood barrier system is undergoing the international patent process in many countries around the world, including the Greater China.

Prior to the emergence of the anti-flooding range of solutions, Parafoil's primary business was in providing life-safety solutions in the specialist fields of Engineered Smoke Control and Natural Ventilation Systems. The principal partners in Parafoil have been involved in this field for more than 30 years. Its products are designed by our dedicated team of engineers to meet fit-for-purpose applications not only in terms of operational functionality but also very importantly - aesthetics.



## Seasonstone Singapore Pte Ltd

Booth No. 9D081

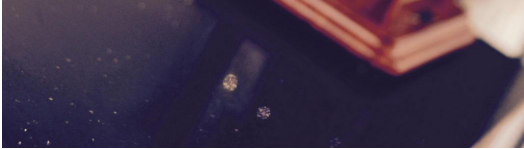


### Mr Chow Lai Yew

Project Executive  
19 Burn Road  
#03-03 Advance Building  
Singapore 369974

T +65 9760 8583  
E [enquiries@seasonstone.com.sg](mailto:enquiries@seasonstone.com.sg)  
W [www.seasonstone.com](http://www.seasonstone.com)

Creating a positive difference in every environment it builds, Seasonstone Quartz is the quartz for the future. Simultaneously inspired by the world's leading design consultants and interior architects while being built from a rock-solid foundation of grit and fortitude – Seasonstone's engineered quartz surfaces are world-class, long-lasting surfaces created through leading vibro-compaction compression technology, perfect for use in a diverse range of interior finishing. Channeling both elegance and strength from nature, Seasonstone never sits still, constantly developing alongside the latest trends to keep up with the growing demands of today's architecture landscape. Accredited as a Singapore green building product, Seasonstone Quartz also strongly believes in an environmentally sustainable business, uniquely recycling over 95% of the water utilized across its production processes.



## TR Formliners Pte Ltd

Booth No. 9D075-77

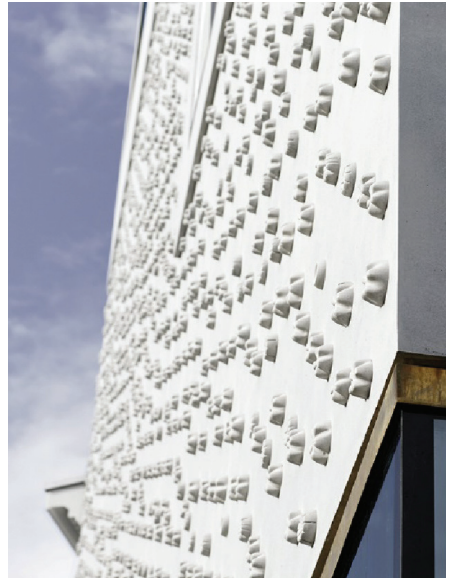


### Mr Darryl Lee

Sales Director  
30 Kallang Place #05-18/19  
Kallang Basin Ind. Est.  
Singapore 339159

T +65 6297 7981  
E [darryl@technorite.com.sg](mailto:darryl@technorite.com.sg)  
W [www.reckli.net](http://www.reckli.net)

TR Formliners Pte Ltd is the exclusive agent for RECKLI's products in Singapore & Malaysia. With more than 250 formliner designs & an ability to offer unique individual bespoke ideas, RECKLI has helped to texture many building facades, long recognised as a building's flagship. Its high standard of aesthetics and quality make TR Formliners a strong partner for the design of architectural concrete.





## Vector Foiltec Pte Ltd

Booth No. 9E086

### Mr Matthew Penrose

Vice-President Sales

### Mr Michael Peh

Senior Sales Manager

72B Pagoda Street

Singapore 59231

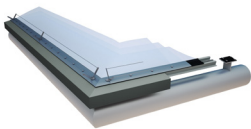
T +65 6225 0628

E SG@vector-foiltec.com

W www.vector-foiltec.com

Established in 1981, Vector Foiltec invented ETFE (Ethylene-Tetra-Fluoro-Ethylene) cladding technology and is the global market-leading specialist. Today, we manufacture our product under the trademark of Texlon® and operate two high-capacity production facilities. As well as holding the world's most comprehensive body of related research data, we also continue to bring further technical innovation to the industry.

Our position as market leader stems from our unrivalled ability to identify core project challenges and deliver elegant and cost-effective engineering solutions. Our dynamic company culture and our international presence enables us to react promptly to global project demands, ensuring fast response times and a reliable service.



Maintaining in-house multidisciplinary expertise continues to be a key factor in our success, enabling us to resolve complex design issues efficiently. Our turnkey design & build services range from: the initial concept through to scheme design; climate-based optical and thermal assessment; and foil and structural engineering analysis. Additionally, Vector Foiltec provides specialised production, installation and after-sales services. Our primary goal is to deliver reliable cost-effective solutions for our clients within a short timeframe, while remaining true to the aesthetics of the individual projects.

We have state of the art production facilities located in Bremen and Beijing. Our production facilities are dedicated to Texlon® ETFE foil production and each factory has an area of approximately 5000m<sup>2</sup>. Our current foil handling production capacity is approximately 500,000m<sup>2</sup> per annum of cushions, equivalent to approximately 1,500,000m<sup>2</sup> of foil.



## Vodapruf Pte Ltd

Booth No. 9D079

### Mr Wang Wee Hwa

General Manager

8B Admiralty Street

#08-12

Singapore 757440

T +65 6635 5729

E inquiry@vodapruf.com

W www.vodapruf.com

Vodapruf Pte Ltd specializes in supplying high quality construction materials in Singapore and Malaysia. It delivers product solutions for waterproofing products and lightweight insulation screed. Vodapruf works closely with customers, contractors, consultants and developers to provide strong technical support and product solutions. Vodapruf Pte Ltd is the manufacturer of LIGHTHERM lightweight aggregate and sole distributor for Koster Bauchemie AG Range of Waterproofing Products.



## VODAPRUF



Organised by



Supported by



Singapore Furniture Industries Council  
新加坡家具工业理事会

62 Sungei Kadut Loop  
#04-19 Singapore 729507

**T** +65 6569 6988

**F** +65 6569 9939

**E** [sfic@singaporefurniture.com](mailto:sfic@singaporefurniture.com)

**W** [www.singaporefurniture.com](http://www.singaporefurniture.com)